
INSTRUCTIONS

Original Issue Date: **7/14**

Model: **RDC/DC/RDC2/DC2 Generator Set Controllers**

Market: **Residential/Light Commercial**

Subject: **Firmware Update Using the USB Utility**

Introduction

Use the Kohler® USB Utility to update firmware on the residential/light commercial generator set controllers listed above. Kohler Co. may release updated controller firmware to provide new features or improved generator performance.

These instructions explain how to load the USB Utility onto your Windows® or Mac® laptop computer and then use it to update the firmware on your controller.

OnCue or OnCue Plus users please note:

Newer versions of firmware (version 5.7 or higher for **RDC2** controllers and version 3.18 or higher for **RDC** controllers) are only compatible with **OnCue® Plus**. **OnCue**, the previous version of remote monitoring software, is only compatible with earlier firmware versions.

Required Equipment

- Windows®-based or Mac® laptop computer.
- Internet access (only required to download files from the Kohler website).
- USB cable with one male USB A connector and one male mini-B connector.
- USB utility for Windows or Mac and controller firmware (instructions to download these files are given in the following procedure).

1.1 Download USB Utility and the Controller Firmware

1. Visit this web page to download the controller firmware and KohlerUSBUtility.zip for your Windows or MAC laptop computer:
<http://www.KohlerGenerators.com/usb>

See Figure 1.

2. Select the **Download** button. See Figure 1. When the dialog box appears, select **Open**. The list of files shown in Figure 2 appears.

3. Determine whether your generator uses an RDC/DC or RDC2/DC2 controller. See Figure 3 for controller identification. The DC controller uses RDC firmware; the DC2 controller uses RDC2 firmware.
4. Save the applicable RDC or RDC2 firmware file (.bin file) to your laptop computer. Note the storage location on your computer to access the downloaded files during the installation procedure.

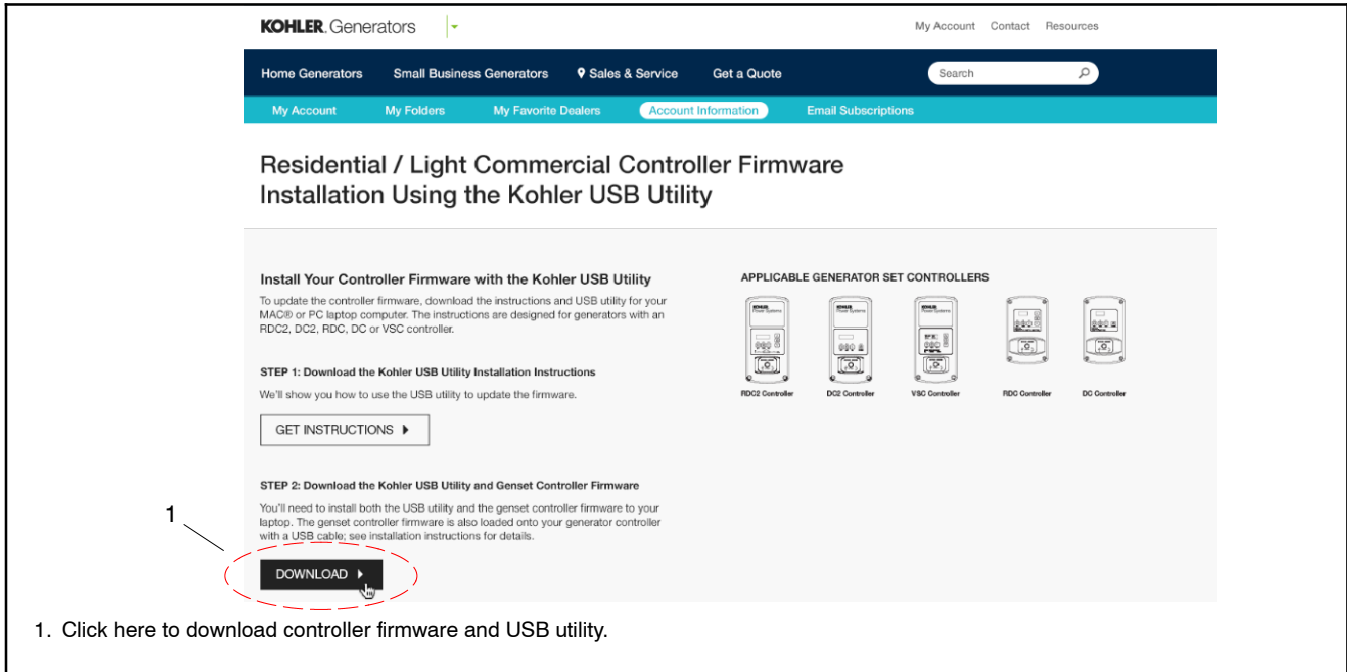


Figure 1 Web Page for Controller Firmware and USB Utility

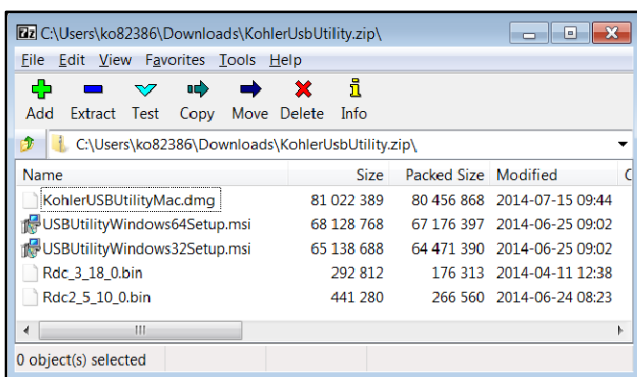


Figure 2 Files for Download

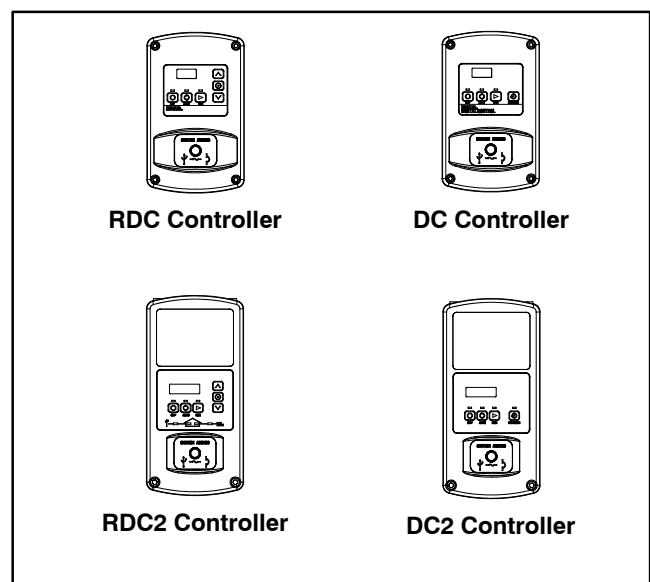


Figure 3 Controller Identification

1.2 Install USB Utility

1. Install the USB Utility on your laptop computer:
 - a. There are different setup files for Windows-based 32 bit and 64 bit computers. If you are not sure whether your laptop uses 32 or 64 bits, go to this website:
<http://support.microsoft.com/kb/827218>
 - b. Select the setup file as needed for your laptop computer:
 - KohlerUSBUtilityWindows32BitSetup.msi for 32 bit Windows-based computers,
 - KohlerUSBUtilityWindows64BitSetup.msi for 64 bit Windows-based computers, or
 - KohlerUSBUtilityMac.dmg for a MAC.
 - c. **To install on Windows:**
 - Double-click on the **setup** file to launch the installation wizard or right-click and select **Install**.
 - Review the license agreement and check the license agreement box to agree to the terms.
 - Select **Install** to start the installation and select **Finish** when the installation is complete.
 - d. **To install on MAC:**
 - Double-click **KohlerUSBUtilityMac.dmg**.
 - When prompted, drag the **Kohler USB Utility** to the desktop or the application folder on your laptop computer.

1.3 Update the Firmware

2. Connect your laptop computer to the generator with a USB A to USB mini-B cable.
1. Launch USB Utility on your laptop.
2. Select the **Update Firmware** tab at the top of the screen. See Figure 4.
3. Verify that the controller is connected to your laptop computer with a USB cable (first status button should display a green checkmark).

4. Select the **Browse** or “...” button and choose the previously downloaded firmware file from the storage location on your laptop computer.
5. USB Utility will verify that the selected firmware is compatible and is a newer version than the firmware currently loaded (first four status buttons should display green checkmarks).

Note: USB Utility will not load a firmware version that is earlier than the firmware version currently loaded on your controller (example: version 5.2 is earlier than version 5.5). To load an earlier version of firmware, use SiteTech™ or OnCue®.
6. Select the **Load Firmware** button. When the firmware updates successfully, all status buttons should display green checkmarks.

Note: If the pop-up message “Please reconnect the USB cable to your controller” appears, unplug and then reconnect the USB cable.
7. You are now ready to perform a communication test.

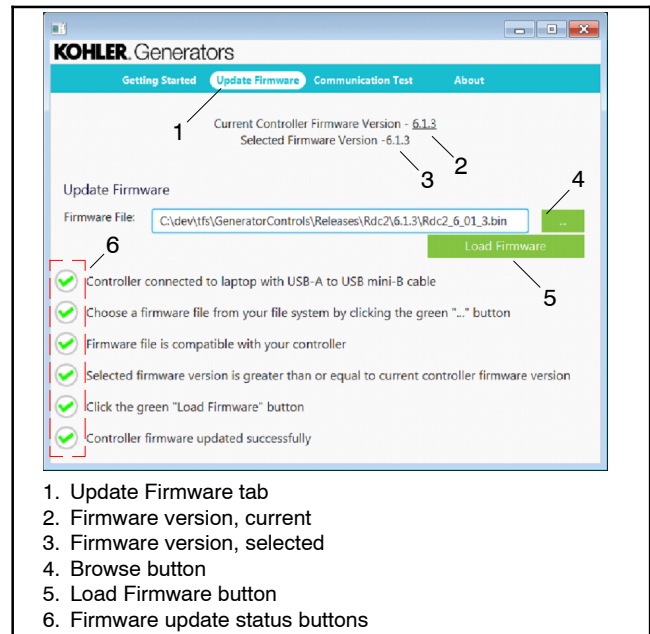


Figure 4 Kohler USB Utility Screen

1.4 Perform a Communication Test

Perform this communication test to confirm that your generator is communicating properly with the Kohler server.

1. Select the **Communication Test** tab at the top of the USB Utility screen. See Figure 6.
2. Select the **Start Communication Test** button.
3. The computer will test the USB connection, automatically fill in the generator serial number, and display a green check mark in the status circle next to “USB connected to genset controller” when successful.
 - If the test is not successful, a pop-up screen will appear. To continue the test, either connect a USB cable to the controller with a USB A to USB mini-B cable or enter the generator serial number in the pop-up menu box (found on the generator nameplate).

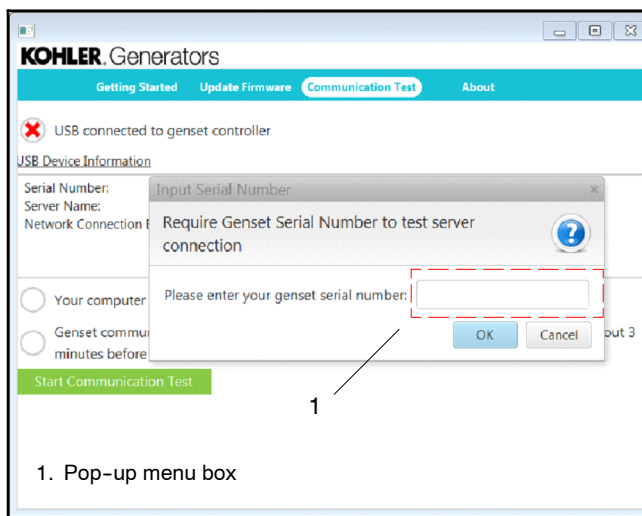


Figure 5 Communication Test Screen

4. Next, the computer will check if your computer can communicate with the Kohler server.
 - If the test is successful, the status circles will be marked with green checkmarks.
 - If the test is unsuccessful, red x's will appear in the status circles. Check your setup and confirm that all cables or wireless items are properly connected.
5. Close the USB utility program and disconnect the laptop from the controller.

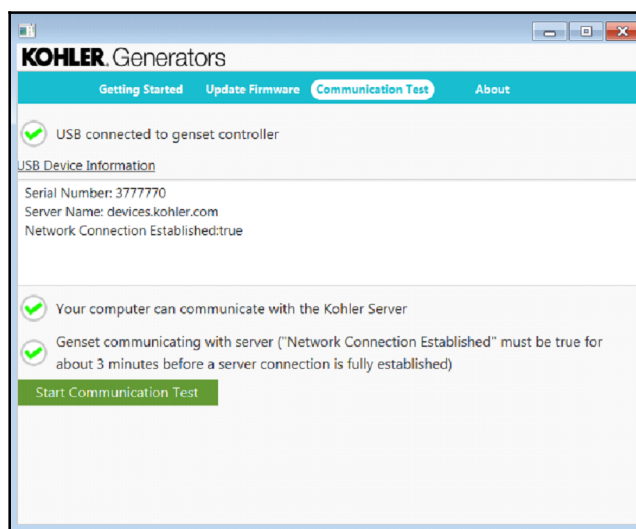


Figure 6 Communication Test Screen

Availability is subject to change without notice. Kohler Co. reserves the right to change the design or specifications without notice and without any obligation or liability whatsoever. Contact your local Kohler® generator set distributor for availability.

© 2014 by Kohler Co. All rights reserved.